

WORK PACKAGE CYCLE

Implementation Pillars

Specifications

Cargo iQ D2D and A2A specs reflect the business rules for the Cargo iQ community and its CDMPs

Master Operating Plan

Changes to the way the community works will be reflected in the MOP

Audit

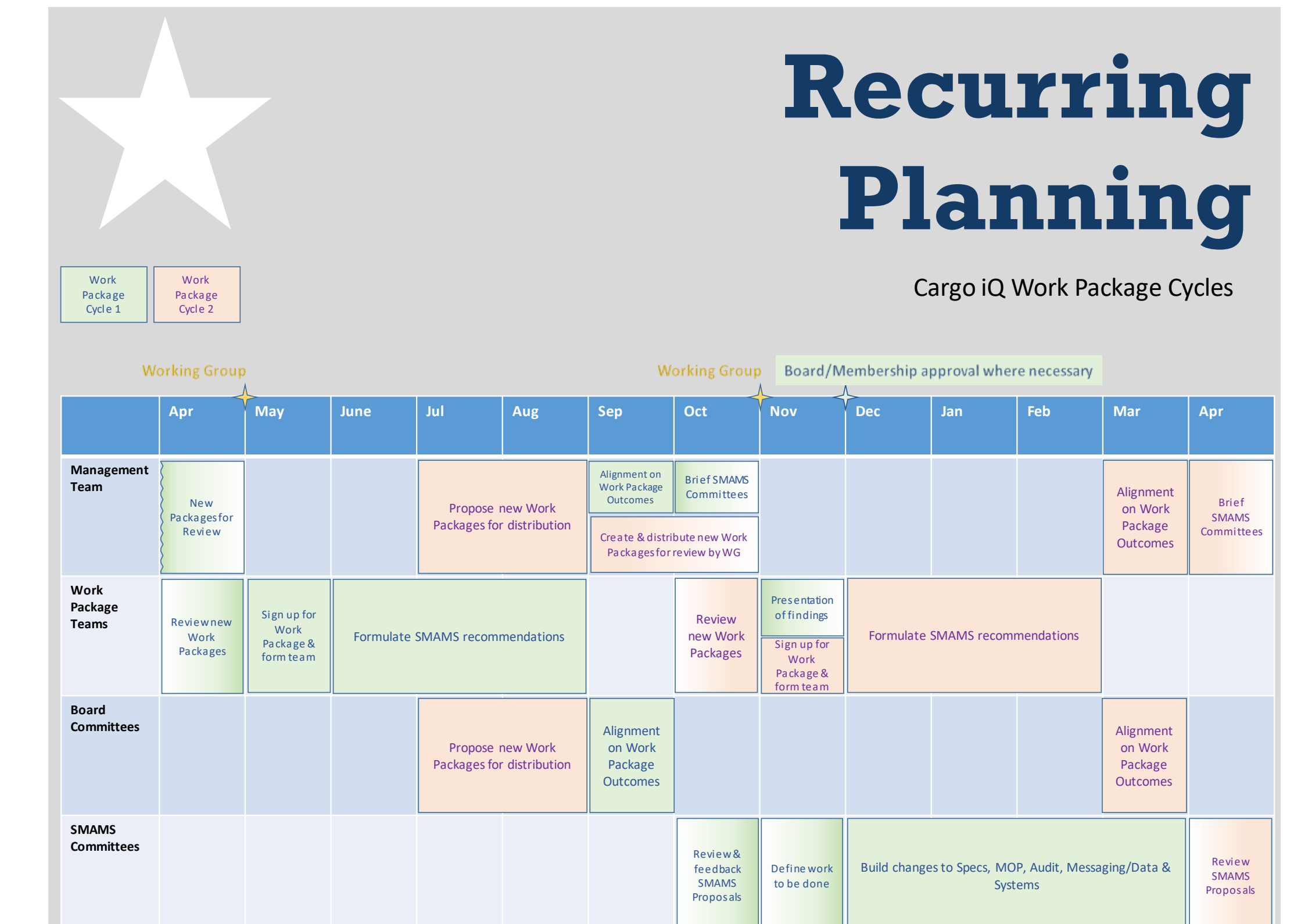
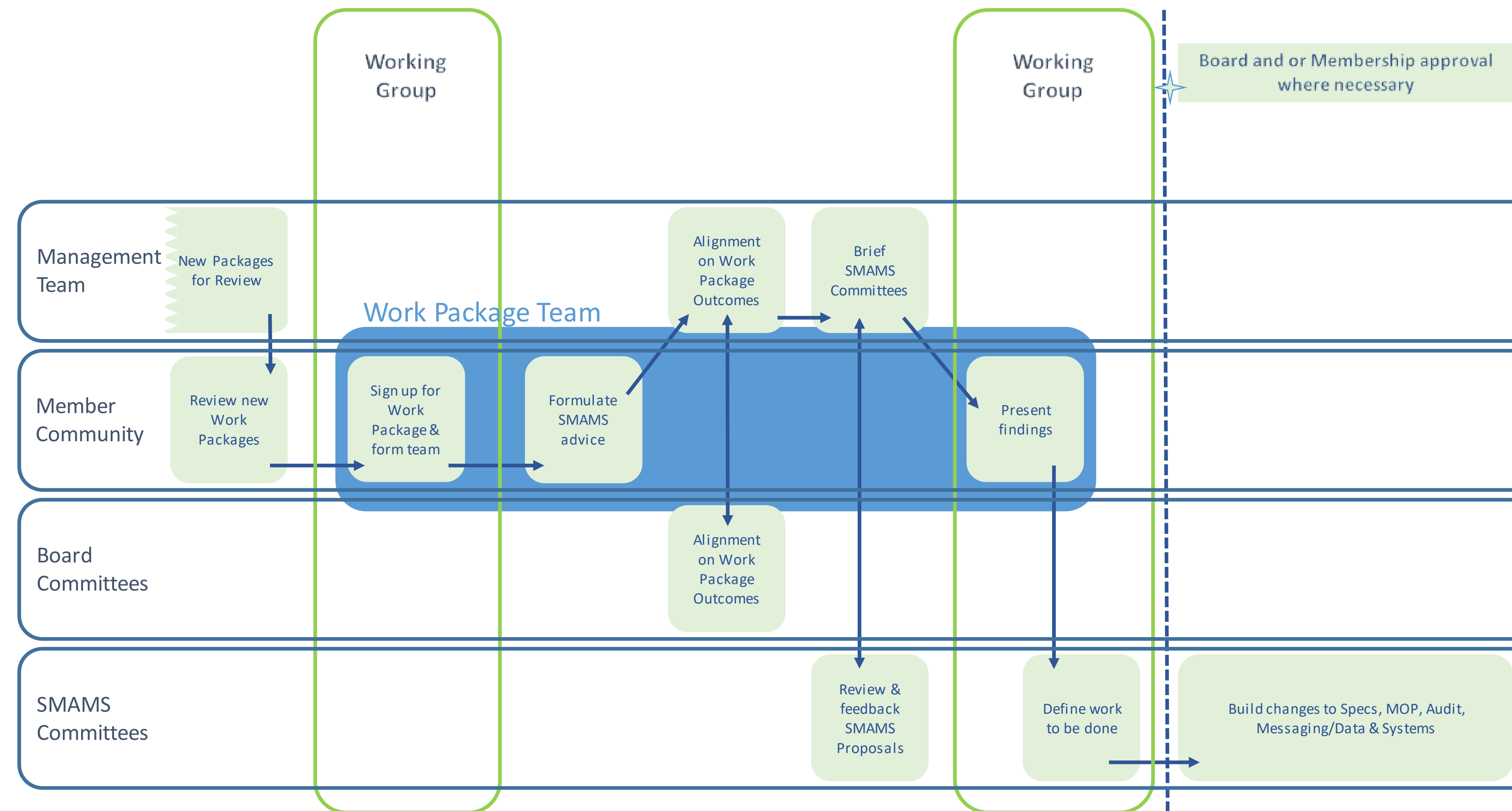
The standards and solutions implemented by members must be verifiable through audits

Messaging & Data Exchange

Technological solutions allow members to share critical data in a reliable and timely way

Systems

Our work needs platforms that turn data into usable information and intelligence



- ### Current Work Packages
- **Care Mapping:** to plan and control specific shipment care conditions
 - **Active Milestone Monitoring:** Ensuring timeliness of event statuses.
 - **Turn Key Implementation:** quick & comprehensive implementing
 - **Product parameters** for relevant milestones of different products
 - Identifying **events** that may be linked to operational feasibility
 - Defining the **role of Cargo iQ** in the digitalization of air cargo

Plan · Deliver · Learn | Together